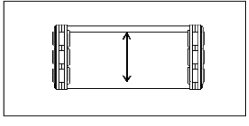
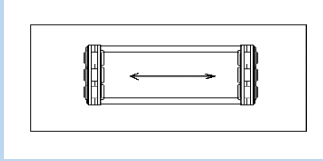


# BS/BSS 0650 = BS/BSS 30

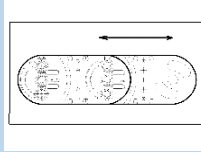
Inner heights=**H**  
İÇ YÜKSEKLİK  
30 mm



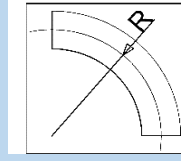
Inner widths=**A**  
İÇ GENİŞLİK  
40-400 mm



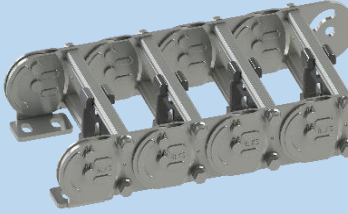
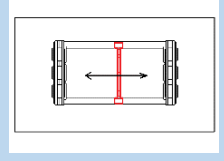
Pitch=**P**  
ADIM  
65 mm



Radius=**R**  
KIVRILMA YARIÇAPI  
75-400

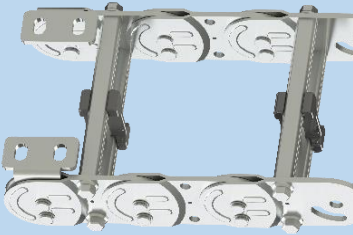


SP



## BS/BSS 0650A (STANDARD)

HER BAKLADA ALÜMİNYUM ÇITA TAKILI SINGLE ALUMINUM FRAME FITTING IN EACH LINK  
ALT ÇITA VE ÜST ÇITA İHTİYACA GÖRE SÖKÜLEBİLİR DETACHABLE FRAMES  
AYARLANABİLİR PLASTİK SEPERATÖR BÖLÜCÜLERLE KABLO TEMASLARI ÖNLENİR  
ADJUSTABLE PLASTIC SEPERATÖR PREVENT INTERNAL FRICTION AND TOUCHING



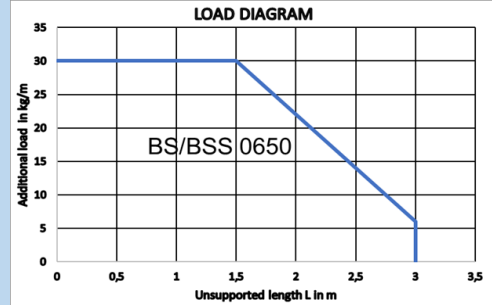
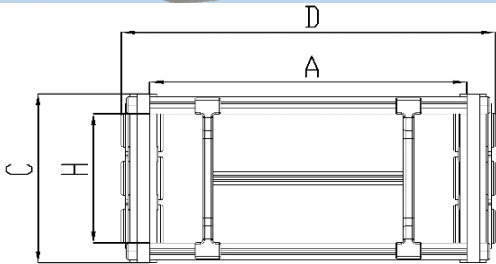
## BS/BSS 0650 SF (SINGLE FRAME)

İKİ BAKLADA BİR ALÜMİNYUM ÇITA TAKILI SINGLE ALUMINUM FRAME FITTING IN TWO LINKS  
ALT ÇITA VE ÜST ÇITA İHTİYACA GÖRE SÖKÜLEBİLİR DETACHABLE FRAMES  
AYARLANABİLİR PLASTİK SEPERATÖR BÖLÜCÜLERLE KABLO TEMASLARI ÖNLENİR  
ADJUSTABLE PLASTIC SEPERATÖR PREVENT INTERNAL FRICTION AND TOUCHING

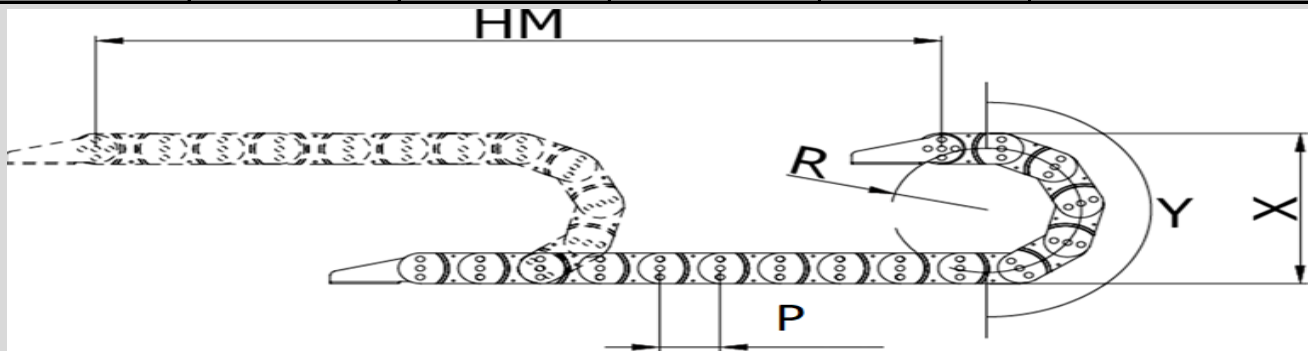


## BS/BSS 0650 PF (PIPE FRAME)

ÇELİK BÖLÜCÜLERLE VE DÖNEBİLEN BORULARLA YUMUŞAK KABLO DESTEĞİ  
SOFT CABLE SUPPORT WITH STEEL SEPARATORS AND ROTARY PIPES  
YUMUŞAK KILIFLI MEDYA HORTUM VE KABLOLARINI KULLANMAK İÇİN İDEALDİR  
IDEAL FOR USE OF SOFT COVERED MEDIA HOSE AND CABLES



ÜRÜN KODU PRODUCT CODE	H=İÇ YÜKSEKLİK INNER HEIGHT	A=İÇ GENİŞLİK INNER WEIGHT	C=DIŞ YÜKSEKLİK OUTER HEIGHT	D= DIŞ GENİŞLİK OUTER WEIGHT	R=KIVRILMA YARIÇAPI BENDING RADIUS
BS 0650	30 mm	40-400 mm	50	A+14 mm	75-400

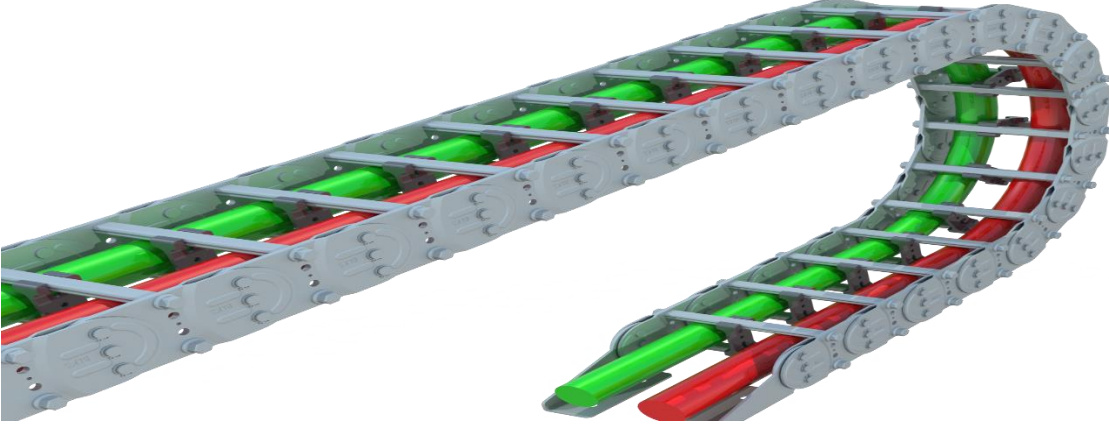


<b>L</b> = KULANILACAK MİKTAR CHAIN LENGHT	<b>HM</b> = HAREKET MESAFESİ MOVEMENT DISTANCE	<b>X</b> = MONTAJ YÜKSEKLİĞİ MOUNTING HEIGHT	<b>P</b> = HATVE PITCH	<b>Y</b> = RADIUS MESAFESİ RADIUS DISTANCE
<b>L = HM/2 + Y</b>		<b>Y = R/π</b>		<b>X = RX2 + C</b>

ÖRNEK SİPARİŞ ORDER EXAMPLE  
BS6500(BS30) A100 R75 L5000

ÜRÜN KODU	A= ACIK K= KAPALI B =ÖZEL İŞLEME(LG)	R=KIVRILMA YARI ÇAPI	L=ZİNCİR BOYU (CHAIN LENGTH)
PRODUCT CODE	A= OPEN K= CLOSED B =(LG)	R=BENDING RADIUS	L=5000 mm
BS0650	A 100	R75	

ÖRNEK GÖRÜNÜM SAMPLE VIEW

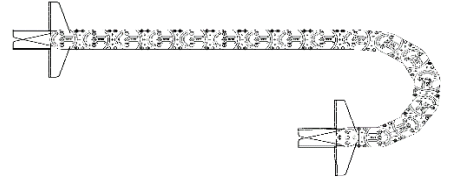
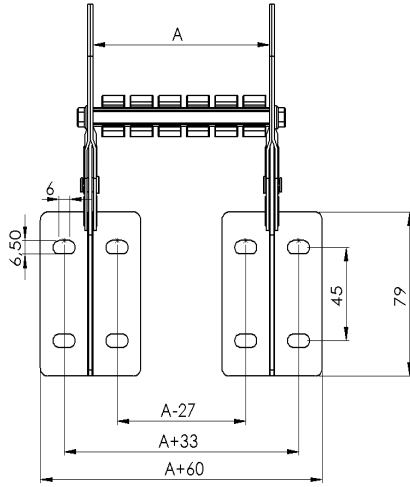


BAĞLANTI TİPİ

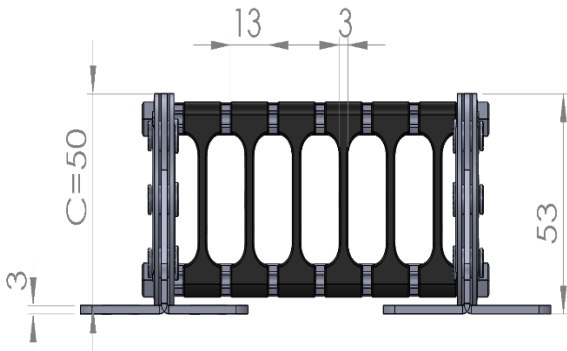
BS/BSS0650 = BS/BSS30

AYAK BAĞLANTI TİPLERİ RESİMDEKİ GİBİDİR  
END BRACKET TYPES AS IN THE PICTURE

AYRICA DİK BAĞLANABİLİR  
ALSO VERTICAL CONNECTING IS POSSIBLE



SEPERATÖR SEPERATİST



KABLO KANALI PLASTİK SEPERATÖRLERLE BÖLÜNÜR  
CABLE CHANNEL DIVIDED WITH PLASTIC SEPERATORS  
ÇALIŞIRKEN İÇERDE SÜRTÜNMEYİ ÖNLER  
PREVENTS INTERNAL FRICTION  
YUMUŞAK DOKULU MEDYA KABLOLARI İÇİN İDEALDİR  
IDEAL FOR SOFT TISSUE MEDIA CABLES