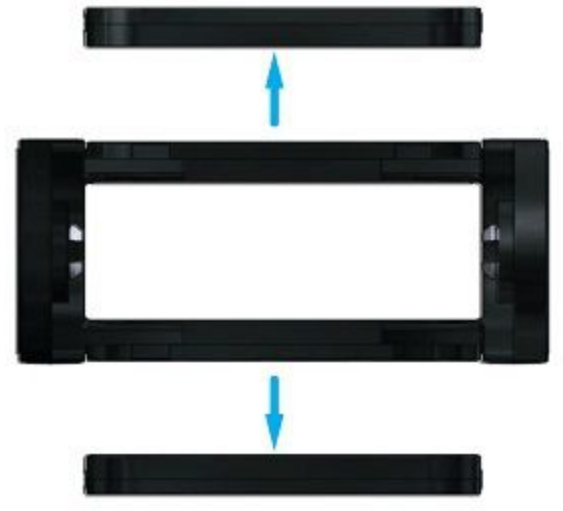
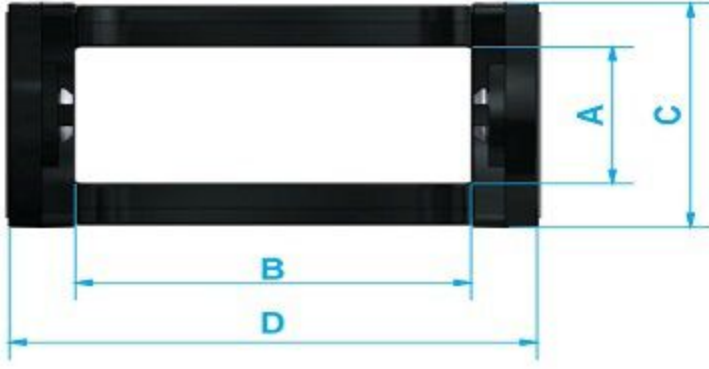


# S40 A SERİSİ



## Malzeme Özellikleri

PA 6 %30 Cam Elyafı Prime  
Çalışma Ortam Sıcaklığı  
(-30 °C +130 °C)

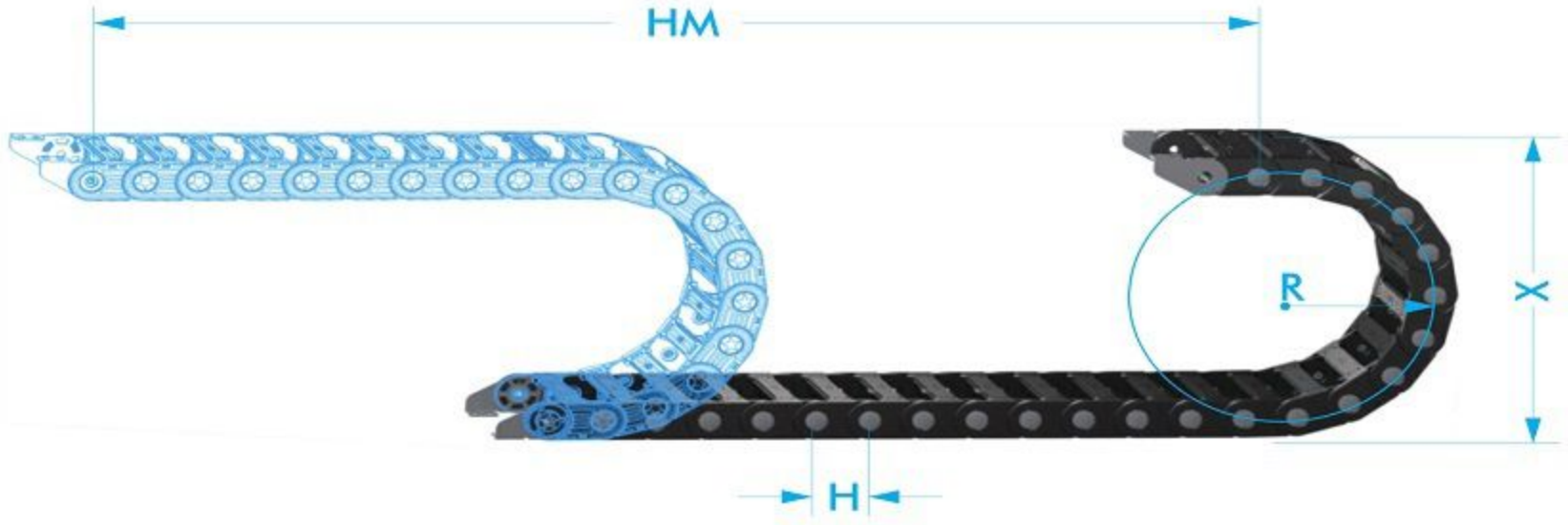
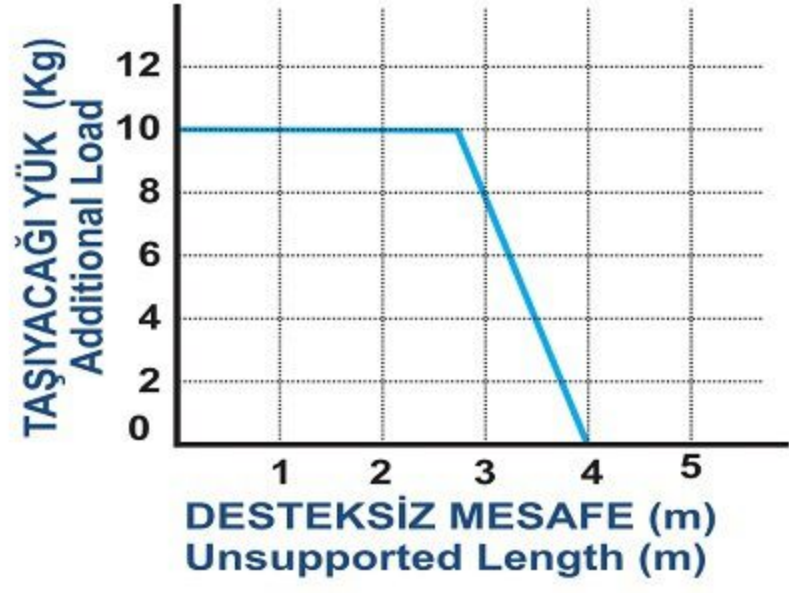
## Material Properties

PA 6 %30 Fiber Glass Prime  
Operating Temperature  
(-30 °C +130 °C)

Ürün Kodu Product Code	A İç Yükseklik Inner Height	B İç Genişlik Inner Width	C Dış Yükseklik Outer Height	D Dış Genişlik Outer Width	R Kıvrılma Yarıçapı Bending Radius	W Ağırlık kg/m Weight Kg/mt
S 40 A 080 R...	40	80	62	108	75-100-150-200	2,39
S 40 A 100 R...	40	100	62	128	75-100-150-200	2,53
<b>S 40 A 125 R...</b>	<b>40</b>	<b>125</b>	<b>62</b>	<b>153</b>	<b>75-100-150-200</b>	<b>2,70</b>
S 40 A 150 R...	40	150	62	178	75-100-150-200	2,87
S 40 A 175 R...	40	175	62	203	75-100-150-200	3,01
S 40 A 200 R...	40	200	62	228	75-100-150-200	3,12

## ÖRNEK KODLAMA / SAMPLE CODING

S40	A	125	R150
İç Yükseklik Inner Height	Açık Seri Open Desing	İç Genişlik Inner Width	Kıvrılma Yarıçapı Bending Radius



Montaj Yüksekliği  
Mounting Height  
 $X = R \times 2 + C$

Radüs Masefesi  
Distance Radius  
 $Y = R \times \pi$

$$L = HM/2 + Y$$

R (mm)	H (mm)	X (mm)	Y (mm)
75	71,50	210	233,50
100	71,50	260	314,00
150	71,50	360	471,00
200	71,50	460	628,00

- L** Kullanılacak Miktar / Calculation of the chain lenght
- HM** Hareket Mesafesi / Movement Distance
- Y** Radüs Mesafesi / Radius Distance
- X** Montaj Yüksekliği / Mounting Height
- H** Hatve / Pitch

## AYAK BAĞLANTI ÖLÇÜLERİ END BRACKETED DIMENSIONS



SERİ	K	M	L	N
S40 A 080	56	62	20	9
S40 A 100	76	82	20	9
<b>S40 A 125</b>	<b>101</b>	<b>107</b>	<b>20</b>	<b>9</b>
S40 A 150	126	132	20	9
S40 A 175	151	157	20	9
S40 A 200	176	182	20	9