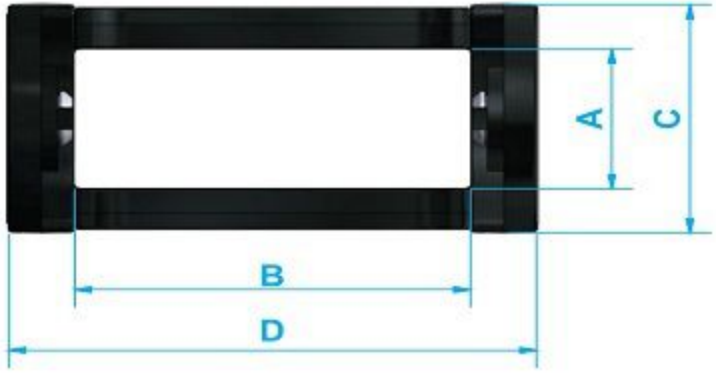


# S35 AÇIK SERİLERİ



## Malzeme Özellikleri

PA 6 %30 Cam Elyafı Prime  
Çalışma Ortam Sıcaklığı  
(-30 °C +130 °C)

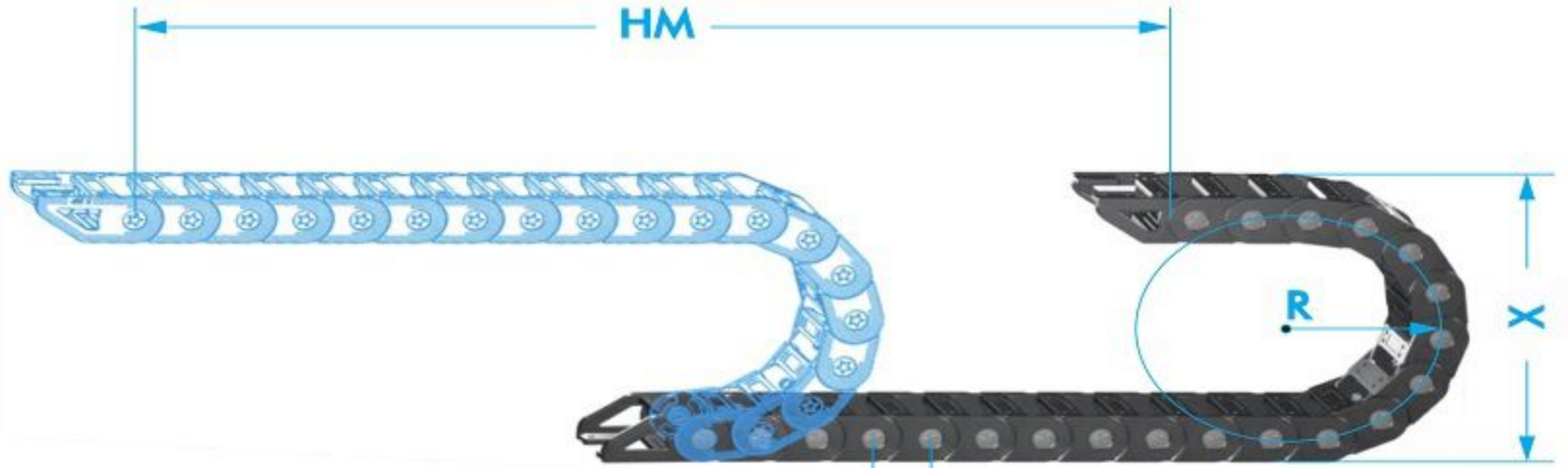
## Material Properties

PA 6 %30 Fiber Glass Prime  
Operating Temperature  
(-30 °C +130 °C)

Ürün Kodu Product Code	A İç Yükseklik Inner Height	B İç Genişlik Inner Weight	C Dış Yükseklik Outer Height	D Dış Genişlik Outer Weight	R Kıvrılma Yarıçapı Bending Radius	W Ağırlık kg/m Weight Kg/mt
S 35 A 040 R...	35	40	52	62	55-75-100-150	1,42
S 35 A 050 R...	35	50	52	72	55-75-100-150	1,51
S 35 A 060 R...	35	60	52	82	55-75-100-150	1,58
S 35 A 080 R...	35	80	52	102	55-75-100-150	1,77
S 35 A 100 R...	35	100	52	122	55-75-100-150	1,92

## ÖRNEK KODLAMA / SAMPLE CODING

S35	A	40	R55
İç Yükseklik Inner Height	Açık Seri Open Desing	İç Genişlik Inner Weight	Kıvrılma Yarıçapı Bending Radius



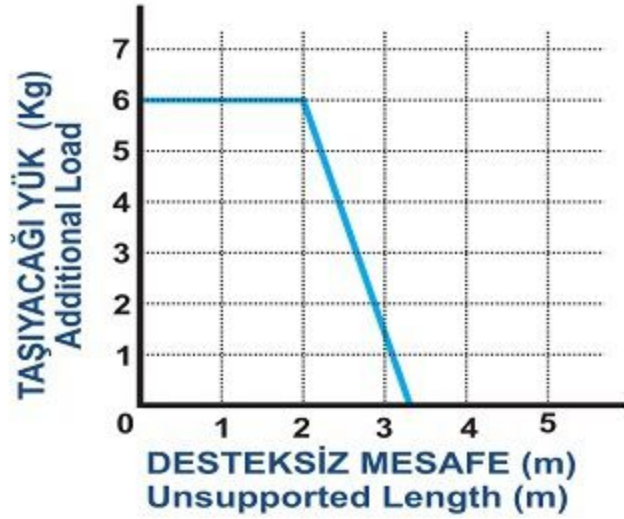
- L** Kullanılacak Miktar / Calculation of the chain length
- HM** Hareket Mesafesi / Movement Distance
- Y** Radüs Mesafesi / Radius Distance
- X** Montaj Yüksekliği / Mounting Height
- H** Hatve / Pitch

$$L = HM/2 + Y$$

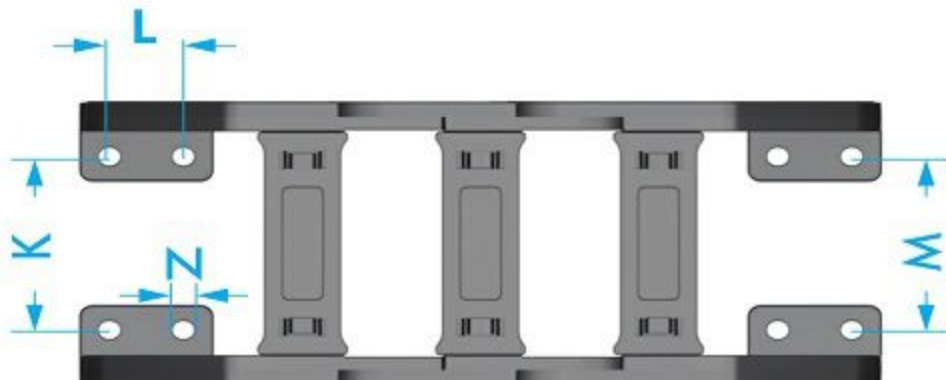
Montaj Yüksekliği  
Mounting Height  
 $X = R \times 2 + C$

Radüs Masefesi  
Distance Radius  
 $Y = R \times \pi$

R (mm)	H (mm)	X (mm)	Y (mm)
55	52,6	162	172,7
75	52,6	202	235,5
100	52,6	252	314,0
150	52,6	352	471,0



## AYAK BAĞLANTI ÖLÇÜLERİ END BRACKETED DIMENSIONS



SERİ	K	M	L	N
S35 A 040	22	22	22	6,5
S35 A 050	32	32	22	6,5
S35 A 060	42	42	22	6,5
S35 A 080	62	62	22	6,5
S35 A 100	82	82	22	6,5